







<p>1 SUPPORT FOR PEOPLE LIVING WITH ALS</p> <ul style="list-style-type: none"> • Living with ALS - for pALS only • The Brighter Side of ALS (people with ALS only) • The Lighter Side of ALS • Laughing in the Face of ALS • This is ALS • Amyotrophic Lateral Sclerosis (ALS) Support Group Page 	<p>6 CLINICAL TRIALS/ TREATMENTS</p> <ul style="list-style-type: none"> • ALS Clinical Trials and Research • ALS Radicava User Group • BrainStorm Trial Participants and Families 		
<p>2 CAREGIVER SUPPORT</p> <ul style="list-style-type: none"> • ALS Caregivers • ALS Spouse Caregivers Support Group • ALS FTD Caregiver Support Group • CALS Widows • Still Standing • Sarah's Caregiver Community 	<p>7 SUPPLEMENTS</p> <ul style="list-style-type: none"> • Pills for pALS • Pot for pALS • ALS Naturally 		
<p>3 VETERANS</p> <ul style="list-style-type: none"> • US Veterans with ALS and Caregivers • Veterans with ALS (VALS) • Veterans with ALS and Caregivers Network 	<p>8 EQUIPMENT AND TECHNOLOGY</p> <ul style="list-style-type: none"> • ALS Equipment Exchange • ALS Preferred Equipment • ALS Trach and Vent Support • ALS Equipment Donations • Ask Me, I'm an AAC User! • Part-Time Wheelchair Support Group • Wheelchair & Mobility Aid Users Group • Tobii Dynavox Community • Smart Box Community 		
<p>4 WOMEN DIAGNOSED WITH ALS</p> <ul style="list-style-type: none"> • ALS Forum for Women (Lou Gehrig's Disease) • Her ALS Story 	<p>9 TRAVEL</p> <ul style="list-style-type: none"> • Traveling with ALS 		
<p>5 FAMILIAL ALS</p> <ul style="list-style-type: none"> • Familial (hereditary, genetic) ALS/MND Support Group • C9orf72 support group for carriers, caregivers, and those at risk 	<p>10 PEG</p> <ul style="list-style-type: none"> • Feeding Tube Families • Feeding Tube Support & Friends • PEG Tube User Group • Adults with Feeding Tubes Support Group 		
<p>6 FAMILIAL ALS</p> <ul style="list-style-type: none"> • Familial (hereditary, genetic) ALS/MND Support Group • C9orf72 support group for carriers, caregivers, and those at risk 	<p>11 TRACH GROUPS</p> <ul style="list-style-type: none"> • Tracheostomy and respiratory • Tracheostomy Warriors Support Group 		
<p>SCAN FOR MORE INFO <i>ACCESS RESOURCES AND SUPPORT</i> </p>		   iamals.org @iamalsorg	

12 WORK/PERSONAL LIFE

- PWD Job Opportunities (Persons with Disabilities) Disability Inclusion
- disABILITY friendship & dating (for all abilities)

13 RELATED DISEASES

- Primary Lateral Sclerosis (MND)
- Primary Lateral Sclerosis (PLS) Worldwide

14 GENERAL SUPPORT FOR ANYONE IMPACTED BY ALS

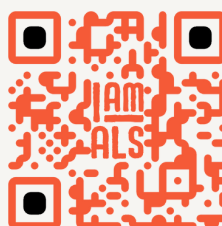
- Living with MND, ALS & PLS
- Life with HSP, PLS & ALS
- ALS We are in it Together
- ALS Family of Faith
- Better Days with ALS
- ALS - Patient and Caregiver tips for everyday living
- ALS Tips, Support, & Kindness
- Keep Fighting Against ALS!
- Kids4Cure
- Lou Gehrig's Disease
- No More Excuses
- Our Lives with ALS
- GALS - Greg's ALS Page
- ALS Support Group without Censorship!
- ALS Warriors
- ALS Families with Children
- Bulbar ALS Support Group
- Amyotrophic lateral sclerosis (ALS) Support Group Page(:
- Ask Disabled Folks-for Disabled Folks
- West Texas ALS Support Group (Lubbock Community ALS Support Group)

TRIBUTE



Bryan “BWayne” Galentine was an incredibly compassionate and loving person. Throughout his experience with ALS, BWayne radiated positivity and warmth. He was driven to ensure that every person impacted by this disease was aware of the community support available to them. We honor and remember him through this resource increasing transparency of the social media communities available to support those impacted by ALS.

SCAN FOR MORE INFO
ACCESS RESOURCES
AND SUPPORT



iamals.org
@iamalsorg

